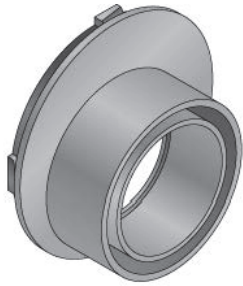
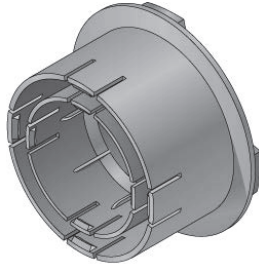


**Catch Basin Accessories** 6" Wide HDPE Modular Trench & Catch Basin



CATCH BASIN OFFSET OUTLET ADAPTER				
Suffix	Description	Color	Material	•
-OUO	3" & 4" Universal Offset Outlet	Black	Plastic	

For WN-940 Catch Basins. Fits 3" and 4" Corrugated Pipe; 3" and 4" SDR Pipe, Sch.40 Pipe and 4" Triple Wall Pipe



CATCH BASIN STRAIGHT OUTLET ADAPTER				
Suffix	Description	Color	Material	•
-SUO	3" & 4" Universal Straight Outlet	Black	Plastic	

For WN-940 Catch Basins. Fits 3" and 4" Corrugated Pipe; 3" and 4" SDR Pipe, Sch.40 Pipe ; 3 and 4" Triple Wall Pipe



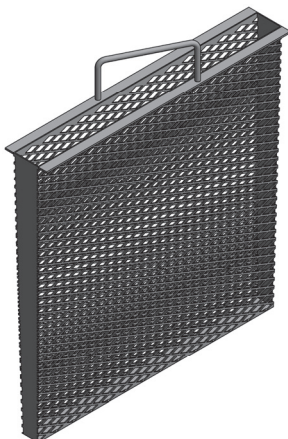
CATCH BASIN STRAIGHT OUTLET ADAPTER				
Suffix	Description	Color	Material	•
-UO6	6" Universal Straight Outlet	Black	Plastic	
-UO8	8" Universal Straight Outlet	Black	Plastic	

For WN-940 Catch Basins. Fits 6" and 8" Corrugated Pipe; 6" and 8" SDR Pipe

CATCH BASIN ADAPTER PLUG				
Suffix	Description	Color	Material	•
-UCP	Universal Adapter Plug	Black	Plastic	

Furnished standard with WN940 Catch Basin to plug one side.

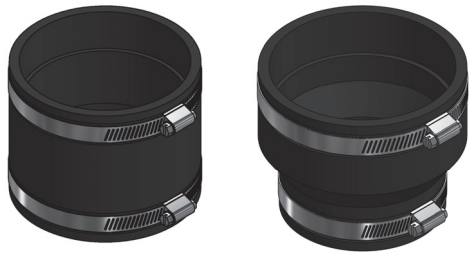
(Above Listed for Replacement Part)



CATCH BASIN TRASH BASKET				
Suffix	Description	Finish	Material	•
-GTB	Trash Basket	Zinc Plated	Steel	

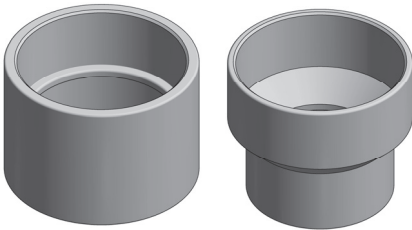
Fits inside catch basin.

Channel Accessories 6" Wide HDPE Modular Trench

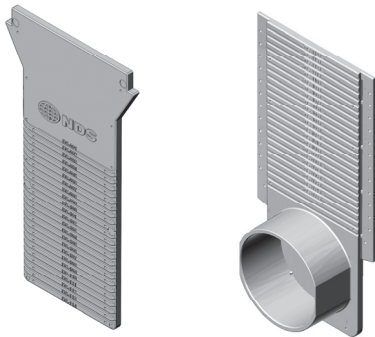


NO-HUB COUPLINGS (REGULAR & REDUCING)				
Suffix	Description	Color	Material	•
-NH42	4x2" No-Hub Reducing Coupling	Black	Neoprene	
-NH43	4x3" No-Hub Reducing Coupling	Black	Neoprene	
-NH44	4" No-Hub Coupling	Black	Neoprene	
-NH64	6x4" No-Hub Increasing Coupling	Black	Neoprene	

Fits 4" outlet on WN-900 channel sections—Requires 4" O.D. hole saw cut.

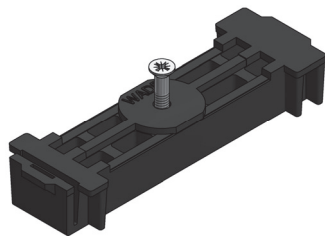


Suffix	Description	Color	Material	•
-PA2	4x2" PVC Reducing Adapter	White	Neoprene	
-PA3	4x3" PVC Reducing Adapter	White	Neoprene	
-PA4	4" PVC Coupling	White	Neoprene	
-PA6	6x4" PVC Increasing Adapter	White	Neoprene	



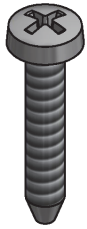
Suffix	Description	Color	Material	•
-UEP	Universal End Plate	Gray	HDPE	
-USP	Universal Side Outlet End Plate	Gray	HDPE	

End plates are universal for all channel and catch basins. Field cuts are required to match trench end connections for various depth channel sections.



Suffix	Description	Color	Material	•
-GL	Replacement Grate Lock w/ Screw	Black	Plastic	

## Hardware 6" Wide HDPE Modular Trench & Catch Basin



<b>(-ECS) END PLATE SECURING HARDWARE (CROSS RECESS—PHILLIPS)</b>		
Description	Material	•
#6 X 3/4" Long Self Tapping Screw (12 Pack)	Stainless Steel	

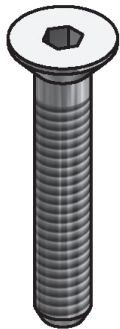
Use on WN-UEP and WN-USP universal end plates to secure to downstream (male) ends of trench sections.



<b>GRATE SECURING HARDWARE (CROSS RECESS—PHILLIPS) STANDARD</b>		
Description	Material	•
1/4-20NC x 1-1/2" Long Machine Screw	Stainless Steel	
1/4-20NC x 2-1/2" Long Machine Screw	Stainless Steel	

The standard grate securing hardware is cross recess (Phillips) screws. 1-1/2" Long Screws are used on all WN-900 Channel Sections and WN-940 Catch Basins to secure 6" wide blank inserts. Screws are reused to secure the modular grates after the concrete pour. For vandal proof or high security areas use either hex key (Allen) or hex key pin screws (See Below).

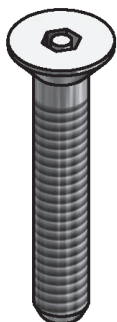
If optional ductile iron frames (-DLP,-DLG) are specified, 2-1/2" Long Screws are required to secure the grates.



<b>(-VP) GRATE SECURING HARDWARE (HEX KEY ) VANDAL PROOF</b>		
Description	Material	•
1/4-20NC x 1-1/2" Long Machine Screw	Stainless Steel	
1/4-20NC x 2-1/2" Long Machine Screw	Stainless Steel	

if (-VP) Vandal Proof is specified, Hex Key (Allen) screws are provided. 1-1/2" Long Screws are used for securing grates in channel sections or catch basins without frames.

If optional ductile iron frames (-DLP,-DLG) are specified, 2-1/2" Long Screws are required to secure the grates.



<b>(-HS) GRATE SECURING HARDWARE (HEX KEY W/ PIN) HIGH SECURITY</b>		
Description	Material	•
1/4-20NC x 1-1/2" Long Machine Screw	Stainless Steel	
1/4-20NC x 2-1/2" Long Machine Screw	Stainless Steel	
1/4-20NC x 5/32 " Hex Key Pin Wrench	Oxide Steel	

if High Security Vandal Proof is specified, Hex Key Pin (Allen) screws are provided. 1-1/2" Long Screws are used for securing grates in channel sections or catch basins without frames.

If optional ductile iron frames (-DLP,-DLG) are specified, 2-1/2" Long Screws are required to secure the grates.