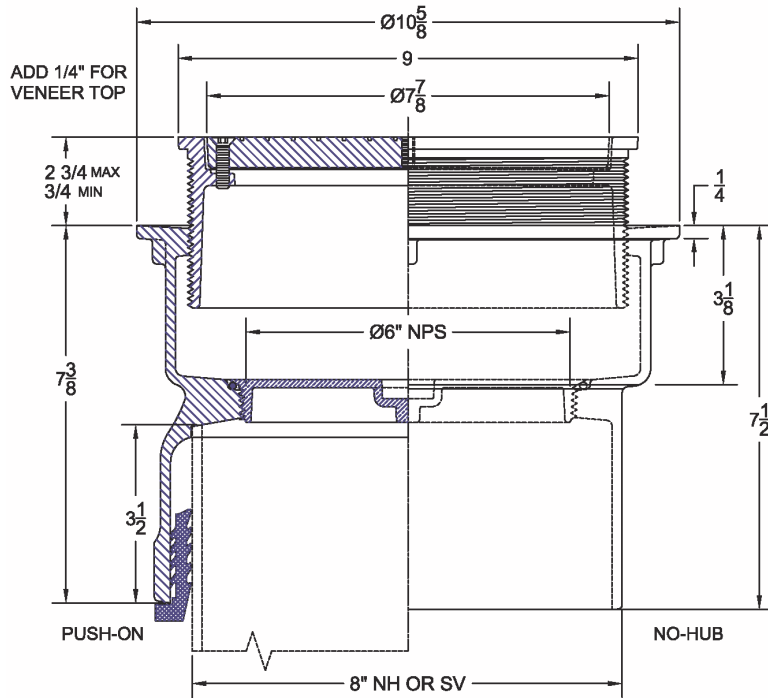
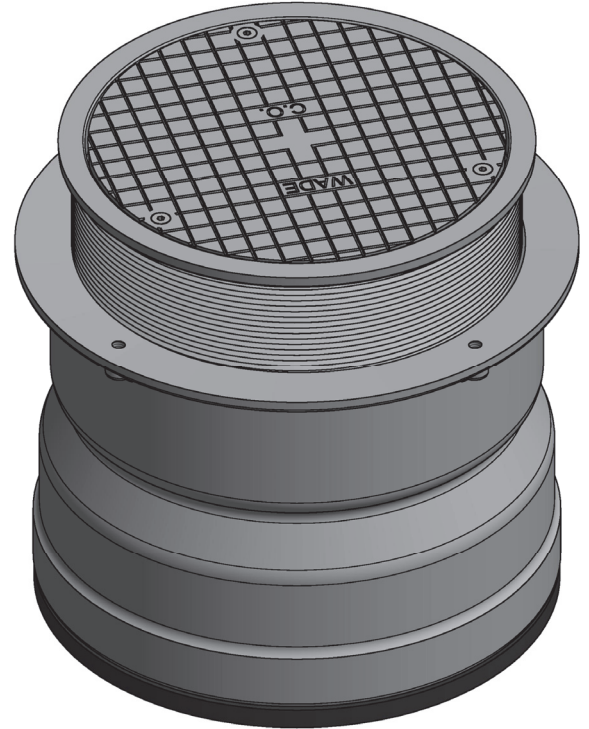
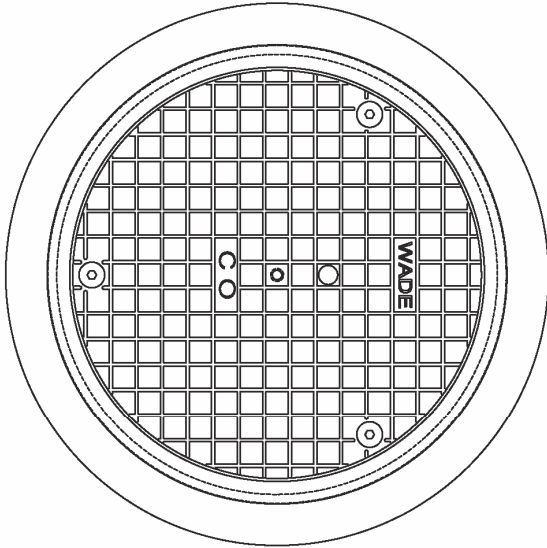


8000-12 (8") Adjustable Floor & Grade Cleanout

| | | |
|---------|----------|------------|
| Project | Engineer | Mechanical |
|---------|----------|------------|



| | |
|-------------|--|
| 8000 | -12 Cast Iron Body with Ductile Iron Top |
| • | |

Regularly Furnished: Cast iron cleanout with threaded, adjustable housing, flanged ferrule, ABS plug, & scoriated top.

| Outlet Variations | | |
|-------------------|-------------|---|
| Type | Designation | • |
| No-Hub | 8NH | |
| Push On Gasket | 8TY(CI) | |

| Suffix Options | | |
|----------------|----------------------------|---|
| Suffix | Description | • |
| -ARC | Acid Resistant Coating | |
| -VP | Vandal Proof Top Assembly | |
| -CM | Carpet Market | |
| -26 | Clamping Collar | |
| -39 | Galvanized Cast Iron | |
| -75 | Bronze Plug in Lieu of ABS | |
| -81 | Gasketed Cover | |
| -83 | Special Marking | |

*Dimensions vary from illustration