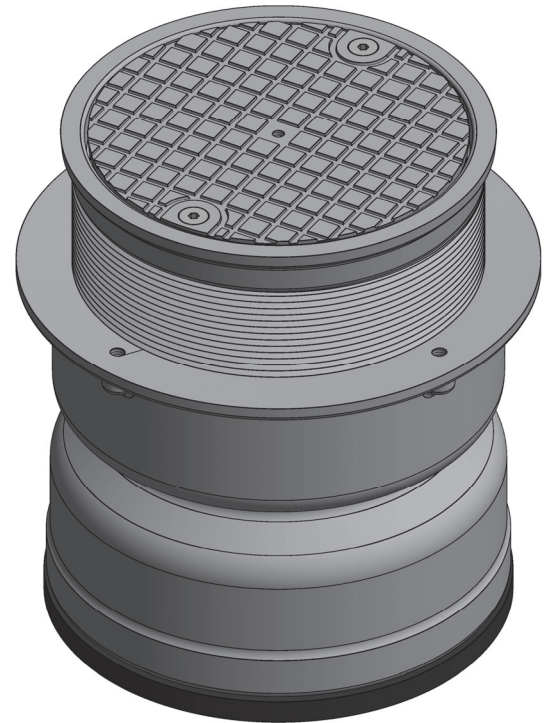
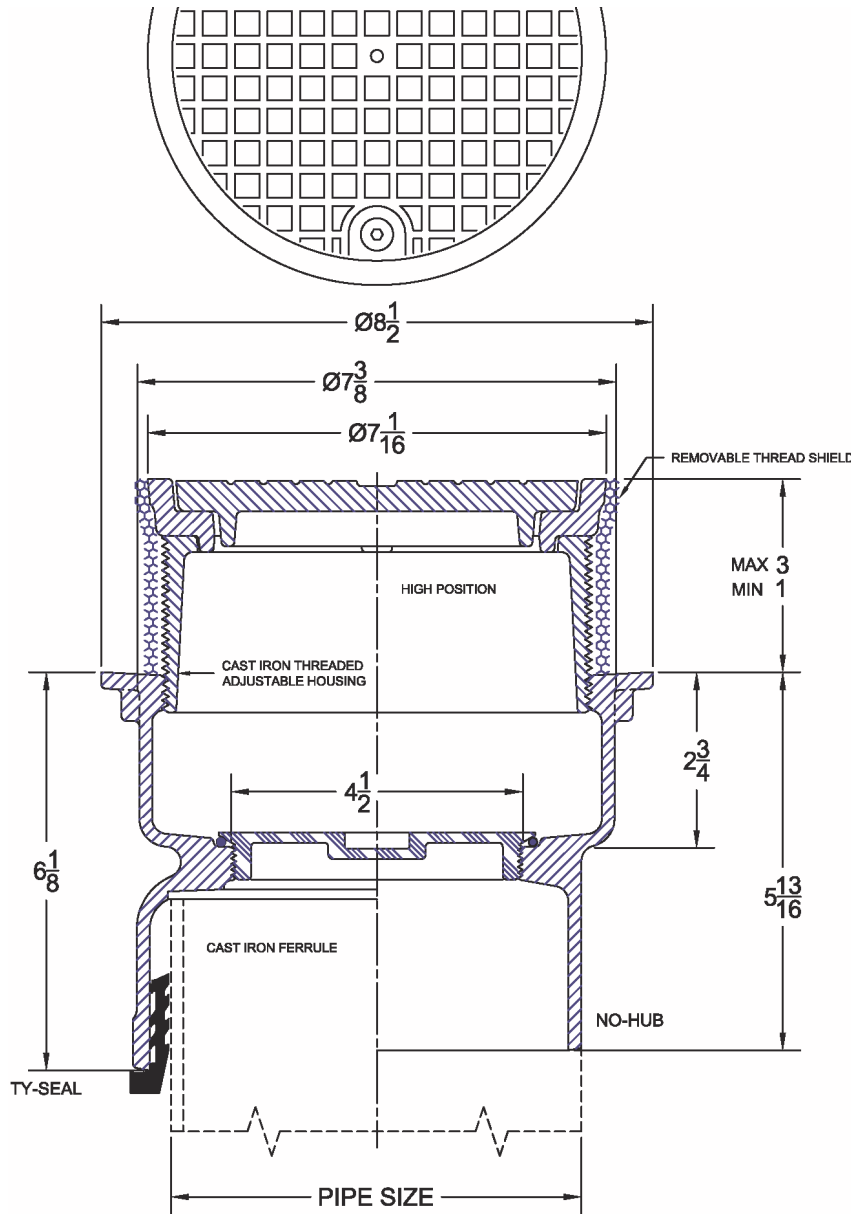


### 8000-12 (6") Adjustable Floor & Grade Cleanout

Project	Engineer	Mechanical
---------	----------	------------



Suffix Options		
Suffix	Description	•
-ARC	Acid Resistant Coating	
-S	Square Cover*	
-VP	Vandal Proof Top Assembly	
-26	Clamping Collar	
-39	Galvanized Cast Iron	
-75	Bronze Plug in Lieu of ABS	
-81	Gasketed Cover	
-83	Special Marking	

<b>8000</b>	<b>-12</b> Cast Iron Body with Ductile Iron Top
•	

**Regularly Furnished:** Cast iron cleanout with threaded, adjustable housing, flanged ferrule, ABS plug, & scoriated top.

Outlet Variations		
Type	Designation	•
No-Hub	6NH	
Push On Gasket	6TY(CI),6TX(PVC)	

\*Dimensions vary from illustration