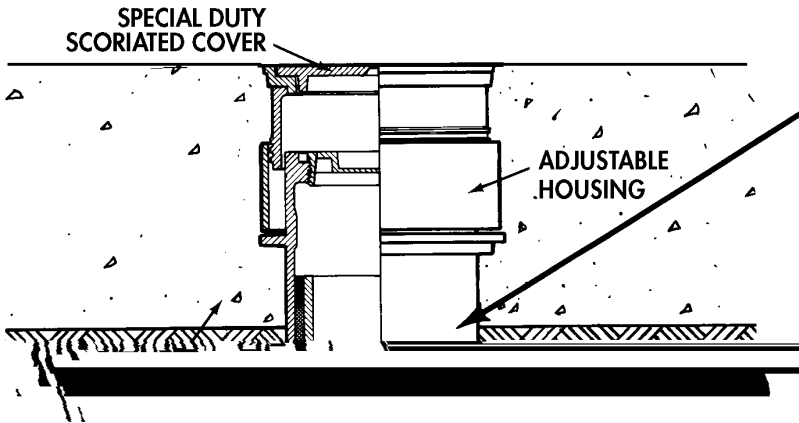
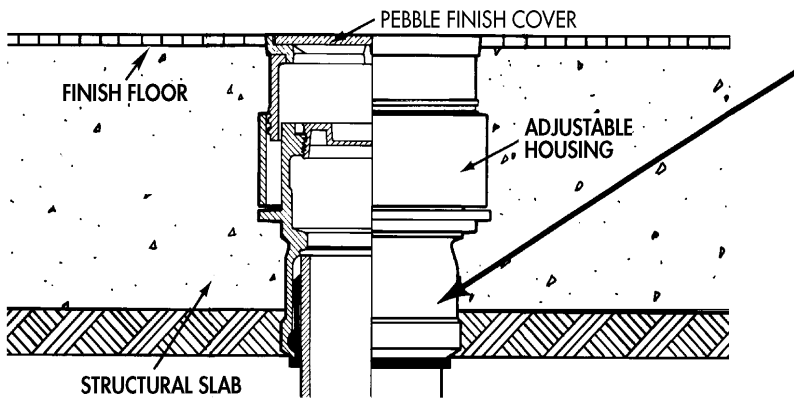


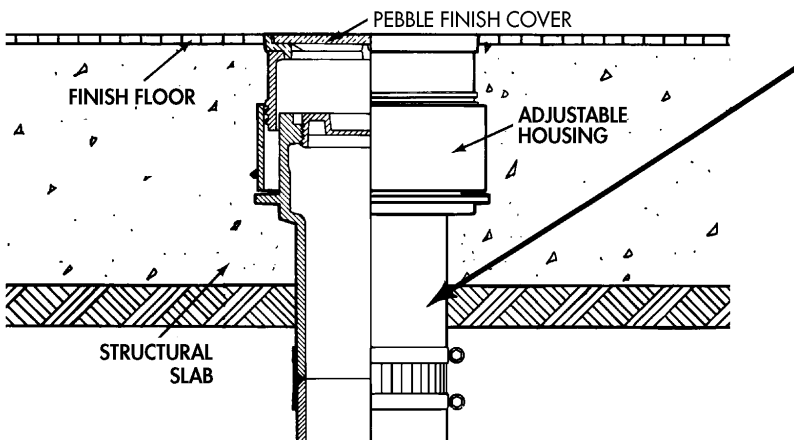
Installation Details



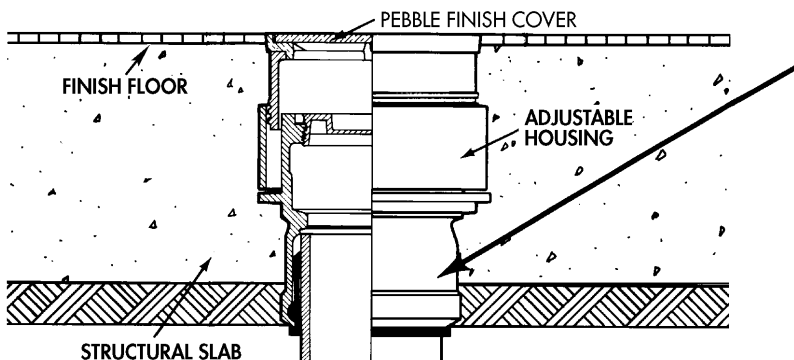
6000IC, Z Inside Caulk - used with lead and oakum. Adjustable floor cleanout installed in unfinished floor slab. Adjustable housing with special duty cover is designed for heavy traffic areas.



6000NH Spigot Outlet - inserted in SV Ty-Seal Hub. Adjustable floor cleanout installed in typical waterproof floor slab. Adjustable housing provides for variations in floor fill.



6000NH Spigot Outlet - used with No-Hub coupling. Adjustable floor cleanout installed in finished floor. Adjustable housing permits flush-with-floor installation.



6000TY Hub Outlet - with gasket, accepts No-Hub and SV pipe. Adjustable floor cleanout is installed in finished floor. Adjustable housing permits flush-with-floor installation.