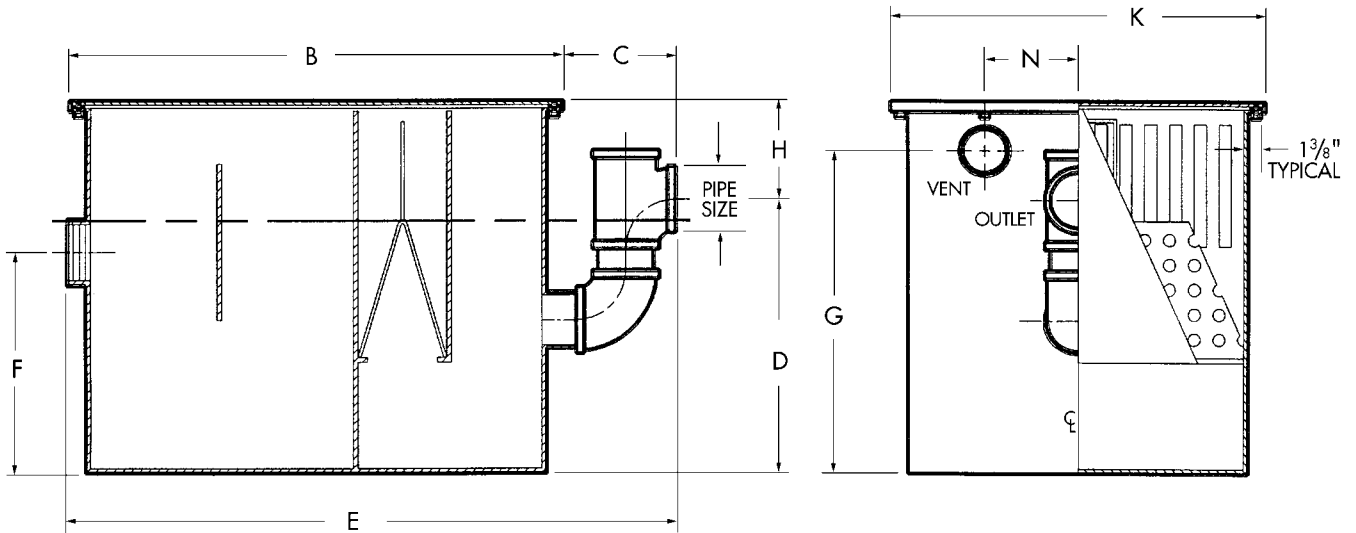


# Large Capacity Grease Interceptors

**WADE**

**5200** Fabricated steel grease interceptor with acid-resisting coating, anti-skid gasketed cover with external trap seal and threaded inlet and outlet.



Cat. No.	Pipe Size	Vent Size	B	C	D	E	F	G	H Min.	K	N	GPM Gallon	Capacity Grease	# CVRS	Ship Wt
5200-075	4	3	35	13 <sup>3</sup> / <sub>8</sub>	22	48 <sup>3</sup> / <sub>8</sub>	17 <sup>3</sup> / <sub>4</sub>	26	8	30	7 <sup>5</sup> / <sub>8</sub>	75	150	1	549
<b>5200-100</b>	<b>4</b>	<b>3</b>	<b>40</b>	<b>13<sup>3</sup>/<sub>8</sub></b>	<b>22</b>	<b>53<sup>3</sup>/<sub>8</sub></b>	<b>17<sup>3</sup>/<sub>4</sub></b>	<b>26</b>	<b>8</b>	<b>30</b>	<b>7<sup>5</sup>/<sub>8</sub></b>	<b>100</b>	<b>200</b>	<b>1</b>	<b>638</b>
5200-150	4	3	45	13 <sup>3</sup> / <sub>8</sub>	27	58 <sup>3</sup> / <sub>8</sub>	22 <sup>1</sup> / <sub>2</sub>	34	13	36	10 <sup>5</sup> / <sub>8</sub>	150	300	2	821
<b>5200-200</b>	<b>6*</b>	<b>3</b>	<b>52</b>	<b>18<sup>3</sup>/<sub>8</sub></b>	<b>35<sup>1</sup>/<sub>4</sub></b>	<b>70<sup>3</sup>/<sub>8</sub></b>	<b>29</b>	<b>44</b>	<b>14<sup>3</sup>/<sub>4</sub></b>	<b>36</b>	<b>10<sup>5</sup>/<sub>8</sub></b>	<b>200</b>	<b>400</b>	<b>2</b>	<b>1175</b>
5200-250	6*	3	61	18 <sup>3</sup> / <sub>8</sub>	46	79 <sup>3</sup> / <sub>8</sub>	39 <sup>1</sup> / <sub>2</sub>	59	21	42	10 <sup>5</sup> / <sub>8</sub>	250	500	2	1951
<b>5200-350</b>	<b>6*</b>	<b>3</b>	<b>71</b>	<b>18<sup>3</sup>/<sub>8</sub></b>	<b>43<sup>1</sup>/<sub>2</sub></b>	<b>89<sup>3</sup>/<sub>8</sub></b>	<b>37</b>	<b>55</b>	<b>20</b>	<b>54</b>	<b>15<sup>5</sup>/<sub>8</sub></b>	<b>350</b>	<b>700</b>	<b>2</b>	<b>2611</b>
5200-400	6*	3	80	18 <sup>3</sup> / <sub>8</sub>	46 <sup>1</sup> / <sub>2</sub>	98 <sup>3</sup> / <sub>8</sub>	40	55	17	54	19 <sup>5</sup> / <sub>8</sub>	400	800	3	2705
<b>5200-500</b>	<b>6*</b>	<b>3</b>	<b>86</b>	<b>18<sup>3</sup>/<sub>8</sub></b>	<b>46<sup>1</sup>/<sub>2</sub></b>	<b>104<sup>3</sup>/<sub>8</sub></b>	<b>40</b>	<b>58</b>	<b>19<sup>1</sup>/<sub>2</sub></b>	<b>57</b>	<b>15<sup>1</sup>/<sub>8</sub></b>	<b>500</b>	<b>1000</b>	<b>3</b>	<b>2994</b>

## OPTIONS

Suffix	Description
26	Anchor Flange & Clamp Device
HD	Heavy Duty Cover

*A minimum of 3" must be added to standard H dimension when ordering anchor flange. Flanged connection is standard on 6" outlet.*