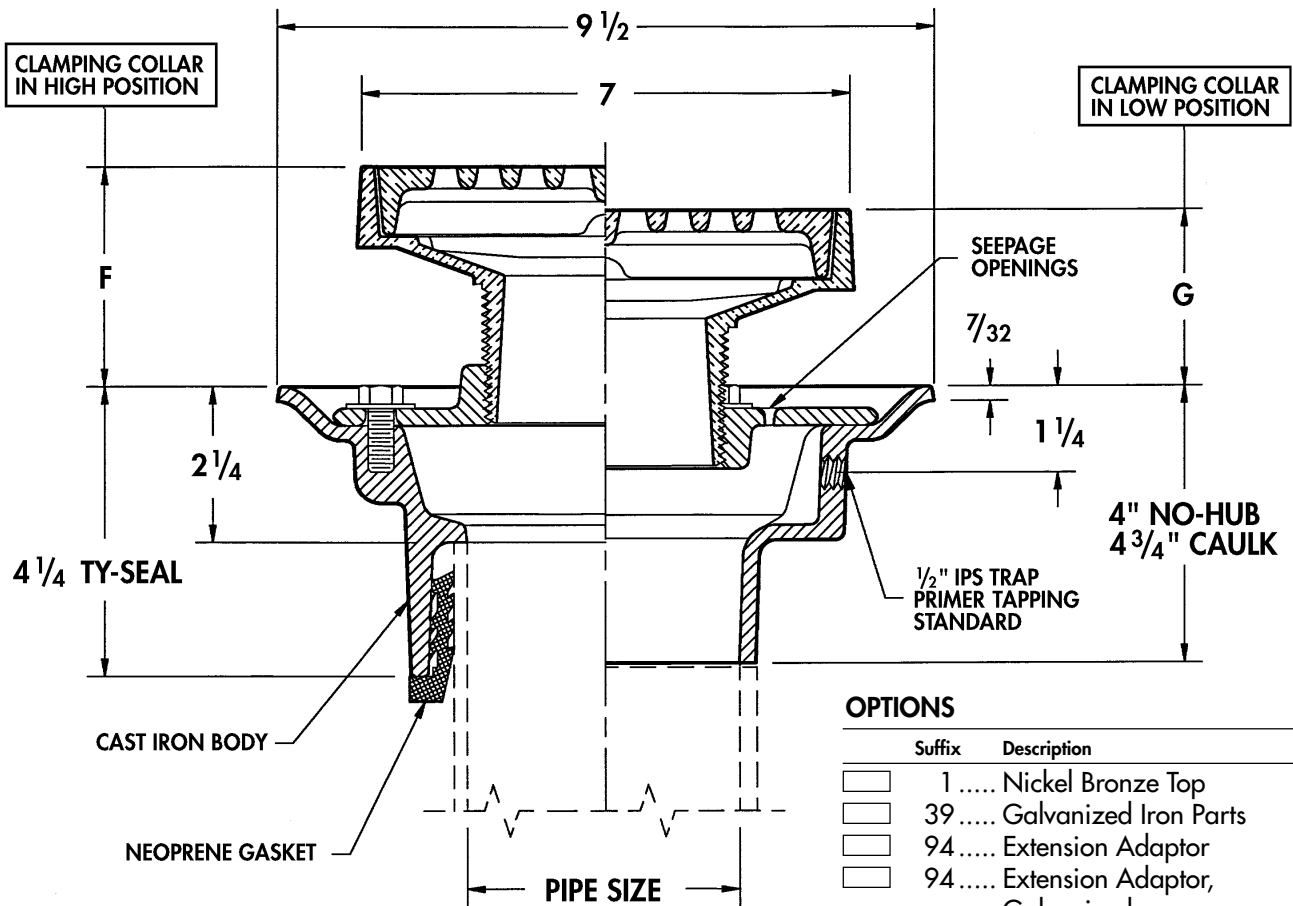


Floor Drains with Adjustable Strainers

WADE

1100TS Cast iron floor drain with flange, integral clamping collar, seepage openings, 1/2" plugged primer tap, and round adjustable heavy duty cast iron 7-in. dia. round strainer with loose set tractor grate.



OPTIONS

Suffix	Description
<input type="checkbox"/> 1	Nickel Bronze Top
<input type="checkbox"/> 39	Galvanized Iron Parts
<input type="checkbox"/> 94	Extension Adaptor
<input type="checkbox"/> 94	Extension Adaptor, Galvanized
<input type="checkbox"/> 179	Security Screws
<input type="checkbox"/> EF4	4" Dia. Funnel
<input type="checkbox"/> EF6	6" Dia. Funnel
<input type="checkbox"/> EG6	2 1/2 x 6 1/8 Elongated Funnel (NB Only)
<input type="checkbox"/> EG8	3 1/2 x 8 1/4" Elongated Funnel

Cat. No.	Pipe Size	Top Size	ANSI* Load Class	Flow Rate (GPM)	Free Area Sq. In.	Wt. Lbs.	F		G	
							Min.	Max.	Min.	Max.
<input type="checkbox"/> 1102TS7	2	7	HD	21	7.5	17	2 1/4	3 3/4	1 3/4	3 1/8
<input type="checkbox"/> 1103TS7	3	7	HD	27	7.5	18	2 1/4	3 3/4	1 3/4	3 1/8
<input type="checkbox"/> 1104TS7	4	7	HD	33	7.5	18	2 1/4	3 3/4	1 3/4	3 1/8

For optional strainers see pages 3-12, 3-15.
 *HD= Heavy Duty (5,000 to 7,499 lbs.)

OUTLET:

- (TY) Ty-Seal
- (NH) No-Hub
- (IC) Inside Caulk