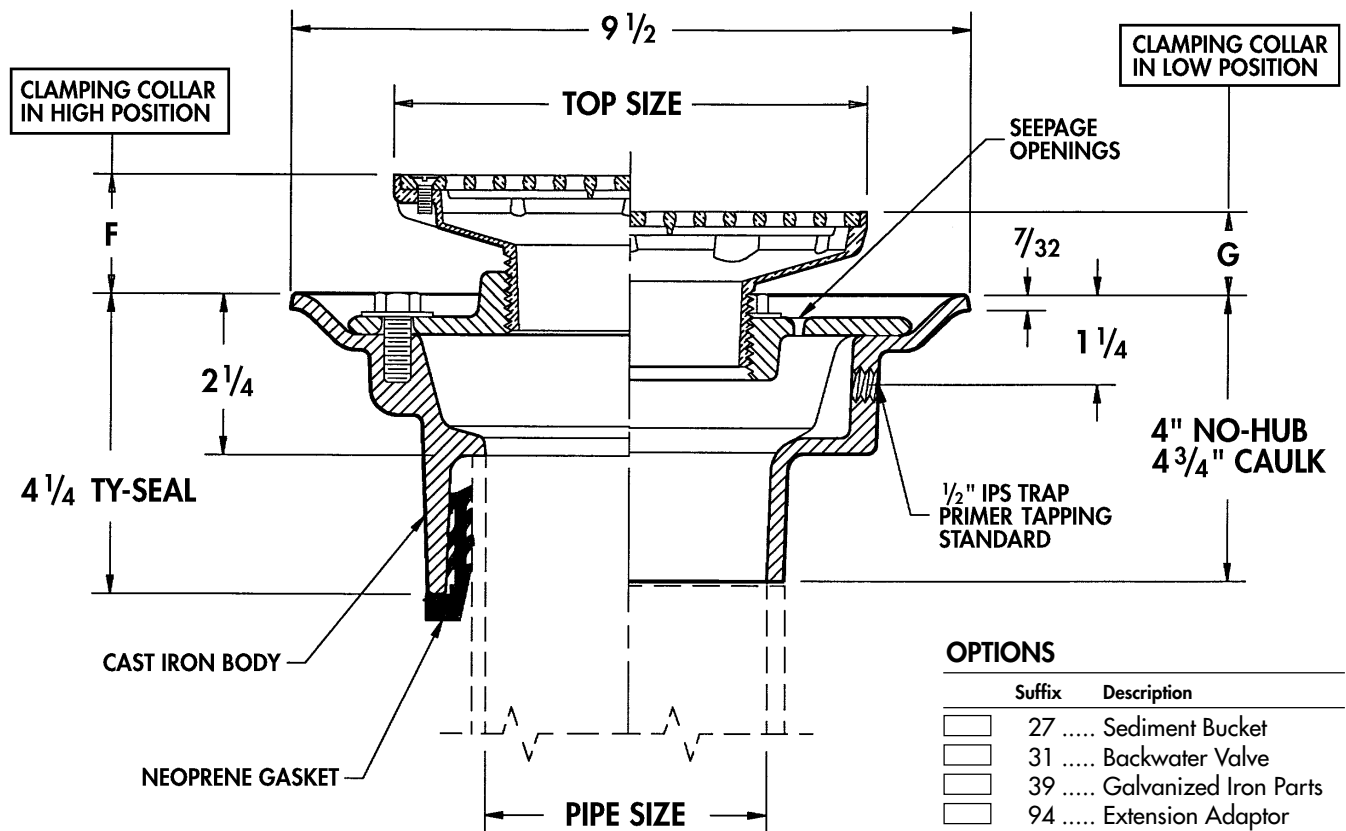


Floor Drains with Adjustable Strainers

WADE

1100G Cast iron floor drain with flange, integral clamping collar, seepage openings, 1/2" plugged primer tap, and adjustable _____ x _____ " square nickel bronze strainer with vandal proof screws.



OPTIONS

Suffix	Description
<input type="checkbox"/> 27	Sediment Bucket
<input type="checkbox"/> 31	Backwater Valve
<input type="checkbox"/> 39	Galvanized Iron Parts
<input type="checkbox"/> 94	Extension Adaptor
<input type="checkbox"/> 94	Extension Adaptor, Galvanized
<input type="checkbox"/> 179	Security Screws
<input type="checkbox"/> EF4	4" Dia. Funnel
<input type="checkbox"/> EF6	6" Dia. Funnel
<input type="checkbox"/> EG6	2 1/2 x 6 1/8 Elongated Funnel (NB Only)
<input type="checkbox"/> EG8	3 1/2 x 8 1/4 Elongated Funnel

Cat. No.	Pipe Size	Top Size	ANSI* Load Class	Flow Rate (GPM)	Free Area Sq. In.	Wt. Lbs.	F		G	
							Min.	Max.	Min.	Max.
<input type="checkbox"/> 1103G5	3	5x5	L.D.	33	6.9	13	1 3/8	2 1/4	3/4	1 5/8
<input type="checkbox"/> 1103G6	3	6x6	L.D.	39	11.1	15	1 1/2	2 3/8	7/8	1 3/4
<input type="checkbox"/> 1103G8	3	8x8	L.D.	44	16.0	17	1 1/8	2 1/4	3/4	1 5/8
<input type="checkbox"/> 1104G6	4	6x6	L.D.	51	11.1	15	1 1/2	2 3/8	7/8	1 3/4
<input type="checkbox"/> 1104G8	4	8x8	L.D.	62	16.0	17	1 3/8	2 1/4	3/4	1 5/8

For optional strainers see pages 3-12, 3-15.

*L.D.= Light Duty (Under 2000 lbs.)

OUTLET:

- (TY) Ty-Seal
- (NH) No-Hub
- (IC) Inside Caulk