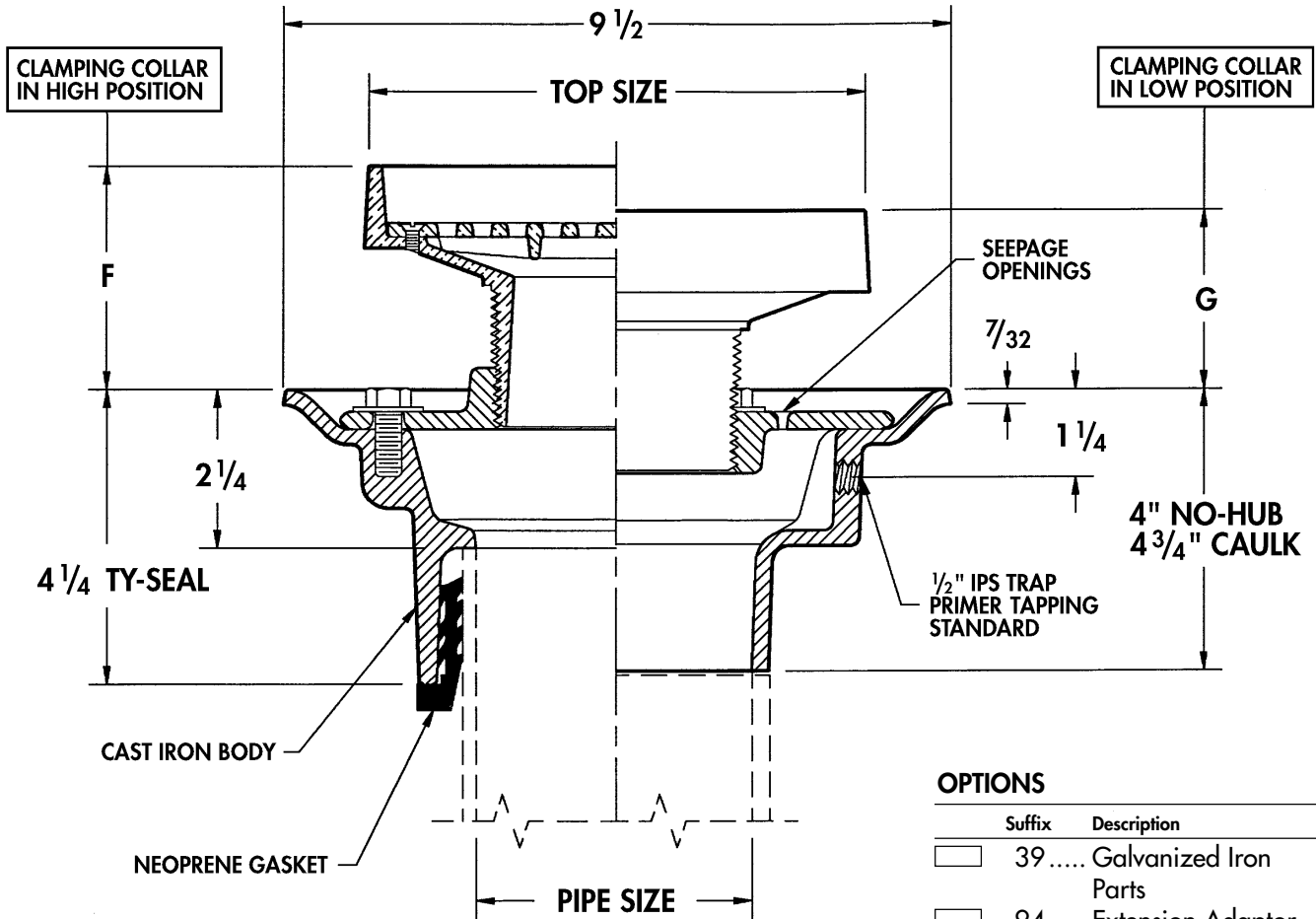


Floor Drains with Adjustable Strainers

WADE

1100ER Cast iron floor drain with flange, integral clamping collar, seepage openings, 1/2" plugged primer tap, and adjustable _____ " dia. nickel bronze strainer with extended rim and vandal proof screws.



OPTIONS

Suffix	Description
39.....	Galvanized Iron Parts
94.....	Extension Adaptor
94.....	Extension Adaptor, Galvanized

OUTLET:

- (TY) Ty-Seal
- (NH) No-Hub
- (IC) Inside Caulk

Cat. No.	Pipe Size	Top Size	ANSI* Load Class	Flow Rate (GPM)	Free Area Sq. In.	Wt. Lbs.	F		G	
							Min.	Max.	Min.	Max.
<input type="checkbox"/> 1102ER5	2	5	L.D.	15	5.4	14	2 1/4	3 3/4	1 5/8	3 1/8
<input type="checkbox"/> 1102ER7	2	7	L.D.	18	13.5	15	2 1/4	3 3/4	1 5/8	3 1/8
<input type="checkbox"/> 1103ER5	3	5	L.D.	22	5.4	15	2 1/4	3 3/4	1 5/8	3 1/8
<input type="checkbox"/> 1103ER7	3	7	L.D.	35	13.5	16	2 1/4	3 3/4	1 5/8	3 1/8
<input type="checkbox"/> 1104ER7	4	7	L.D.	46	13.5	16	2 1/4	3 3/4	1 5/8	3 1/8

For optional strainers see pages 3-12, 3-15.

*L.D.= Light Duty (Under 2000 lbs.)