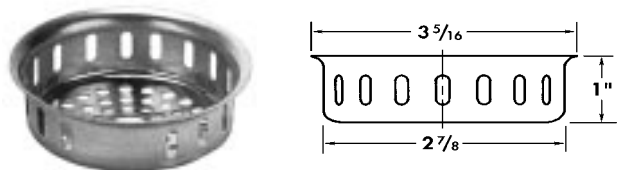


# Floor Drain Options

# WADE

## 27 Sediment Bucket



**Sediment Bucket:** May be used in the following strainers:

|     |     |    |   |
|-----|-----|----|---|
| STD | DTS | FC | K |
| AX  | G   | TS | D |
| F   | H   | TG |   |

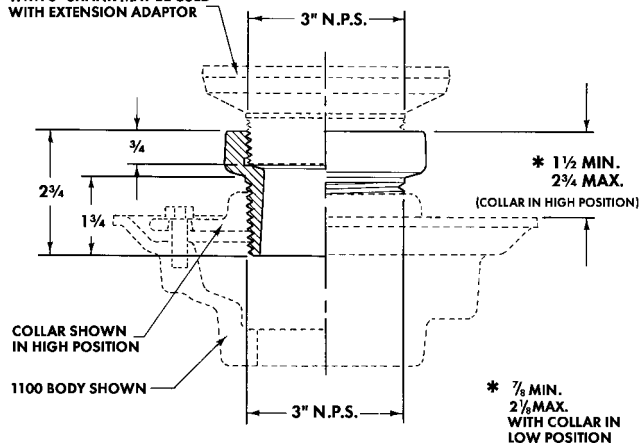
**TO ORDER:** Add suffix 27 to strainer type required.

## 94 Extension Adaptor



**Extension Adaptor-** May be used to increase shank length of any strainer and fits the following bodies:  
1100 1120 1160

ANY ADJUSTABLE STRAINER WITH 3" SHANK MAY BE USED WITH EXTENSION ADAPTOR



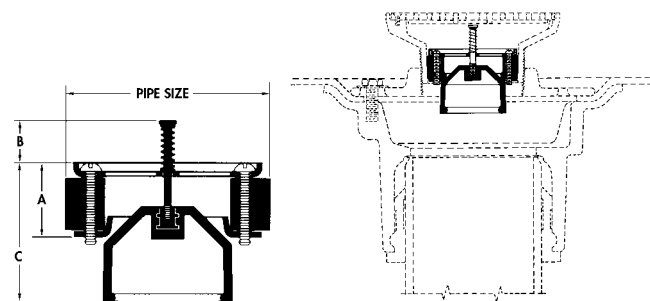
## 31 Backwater Valve



**Backwater Valve:** May be used in the following strainers:

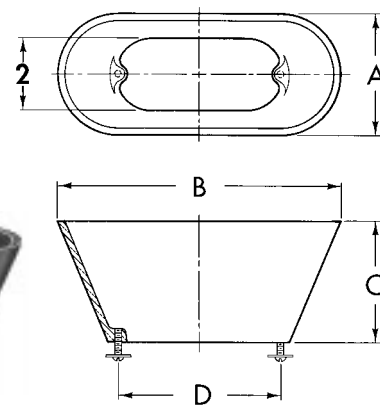
|     |     |   |    |
|-----|-----|---|----|
| STD | DTS | H | TS |
| AX  | ER  | K |    |
| D   | F   | G |    |

**TO ORDER:** add suffix 31 to strainer type required.

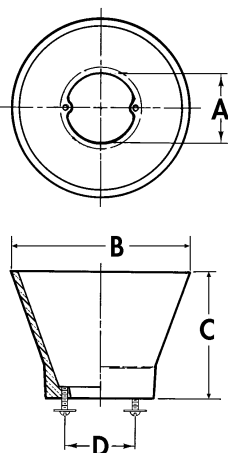


| Pipe Size | A     | B         |             | C         |             |
|-----------|-------|-----------|-------------|-----------|-------------|
|           |       | Full Open | Full Closed | Full Open | Full Closed |
| 2         | 1 1/8 | 1/16      | 13/16       | 2 5/8     | 2           |
| 3         | 1 1/8 | 1/16      | 13/16       | 2 5/8     | 2           |
| 4         | 1 1/8 | 1/16      | 13/16       | 2 5/8     | 2           |

## EG6 2 1/2 x 6 1/8 Elongated Funnel EG8 3 1/2 x 8 1/4 Elongated Funnel



## EF4 4" Dia. Funnel EF6 6" Dia. Funnel



| Suffix No. | Funnel Size   | A     | B     | C     | D       | Wt. Lbs. |
|------------|---------------|-------|-------|-------|---------|----------|
| EF4        | 4             | 2 1/2 | 4     | 3 3/4 | 2 9/16  | 3        |
| EF6        | 6             | 2 3/8 | 6     | 4 1/4 | 2 3/8   | 4        |
| EG6        | 2 1/2 x 6     | 2 3/4 | 6 1/8 | 1     | 4 13/16 | 3        |
| EG8        | 3 1/2 x 8 1/4 | 3 1/2 | 8 1/4 | 3 1/2 | 4 13/16 | 6        |

### OPTIONS

- Painted Cast Iron (N/A EG6)
- Nickel Bronze