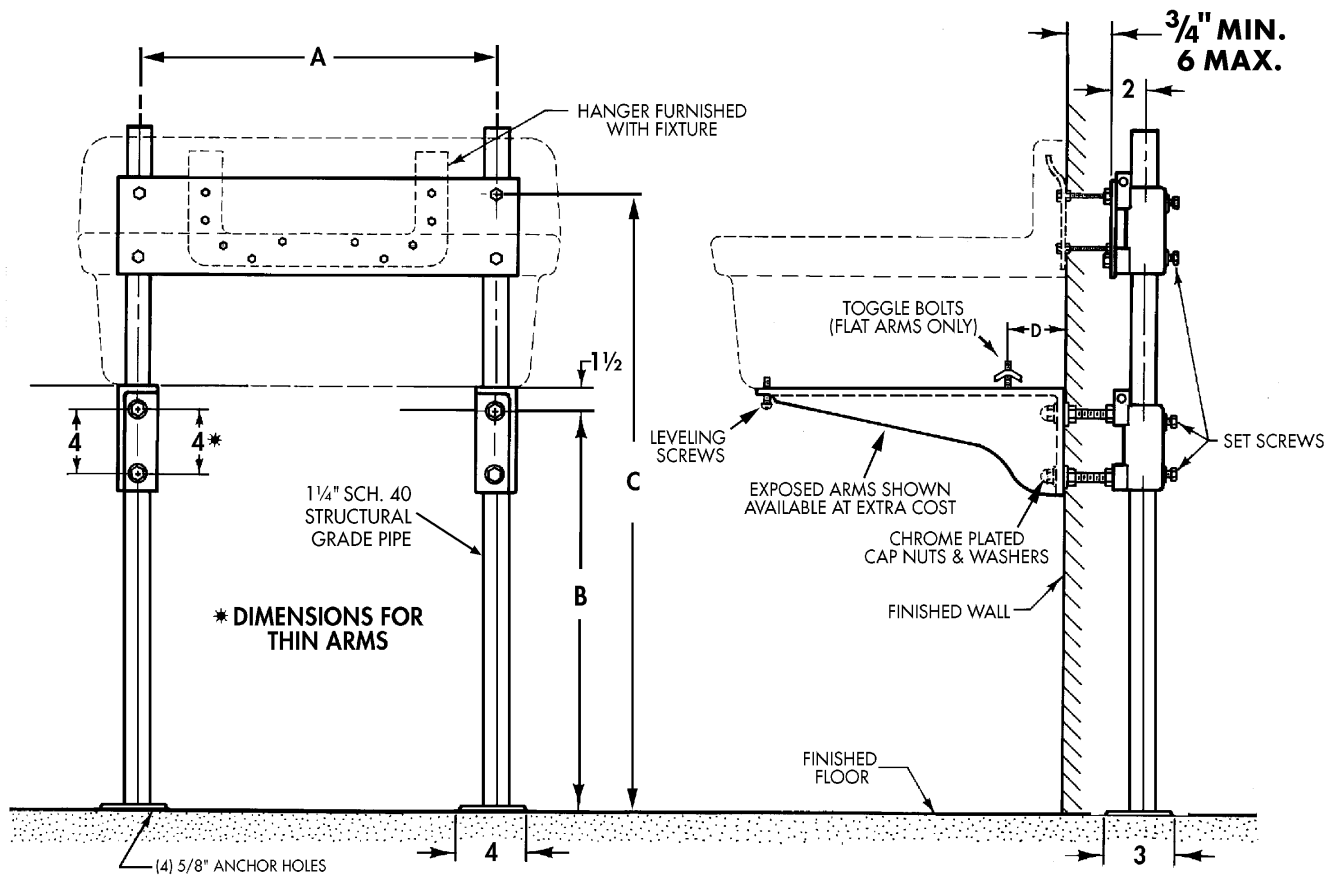


# Sink Carrier

**WADE**

**620** Single sink carrier with white A.R.E. heavy duty exposed arms and hanger support plate.



**\* DIMENSIONS FOR THIN ARMS**

## MODIFICATIONS

Cat. No.	Type	Wt. Lbs.
620	SGL (2 Uprights)	59
623	SGL (3 Uprights)	74

**Note:** Refer to carrier selector for applications to specific fixtures.

**Arm Suffixes:** 01, 02, 03, 009, 011, 014. Refer to Page 2-8 for details.

Suffix	Description
M3	Vandal Proof capnuts
M5	Wrench for VP capnuts
AM27	Valve support plate on upright
AM28	Valve support plate between arms